

# BOCELLI FAMILY WINES

Alcide 2009

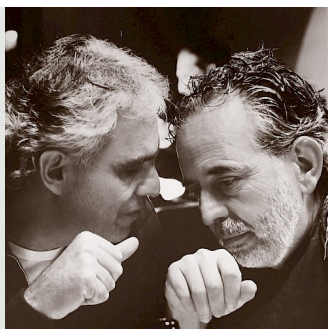
90  
Points

*bocelli*  
FAMILY WINES

A hefty, oak-tinged red, this exudes plum, cherry, clove and smoke flavors, with accents of leather and earth. The sweet fruit and opulent texture alleviate the grip on the long finish. Sangiovese and Cabernet Sauvignon. Drink now through 2020

*Bruce Sanderson, Wine Spectator*

**Wine Spectator**



**Winemaker**  
Alberto Bocelli

**Location**  
Tuscany, Italy

**Annual Production**  
2,400 bottles



**AUGUSTIMPORTS**

WINES • SPIRITS • INNOVATIONS

AugustImports.com