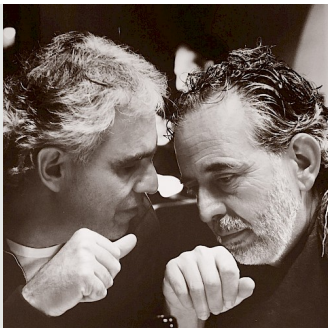


# BOCELLI FAMILY WINES

In Canto 2009

An elegant and earthy cab showing layers of black cherries, olives, dried dark fruits and clay accented by toasty wood. It's not a big, chunky wine. Rather it strikes an attractive, approachable balance between the Old World and New.

*Joe Iurato, The Record*



**Winemaker**  
Alberto Bocelli

**Location**  
Tuscany, Italy

**Annual Production**  
1,650 bottles